

# WINTER UPDATE

## MIDDLE SCHOOL



## DECEMBER HIGHLIGHTS FOR WWS FAMILIES

### MESSAGE FROM THE DIRECTOR

#### >>> THE STICKING POWER OF WWS

As a DIY enthusiast, I can appreciate the usefulness of duct tape. However, when the Leadership and Social Justice Flex group asked me if I would be willing to let students and colleagues tape me to the wall to raise funds to support children affected by the war in Ukraine, I did not think a guy my size could be held off the ground. To my surprise, it worked! I thank our students for their great work organizing the event, as well as everyone who participated in the fundraiser.

- Jeremy Robbins



# PROGRAM UPDATES

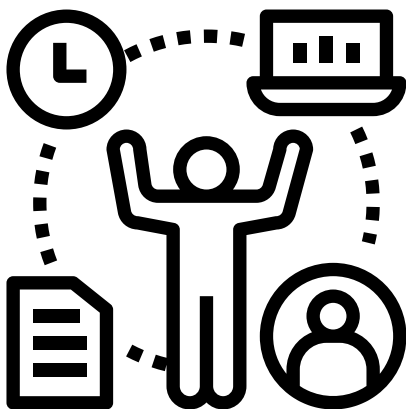
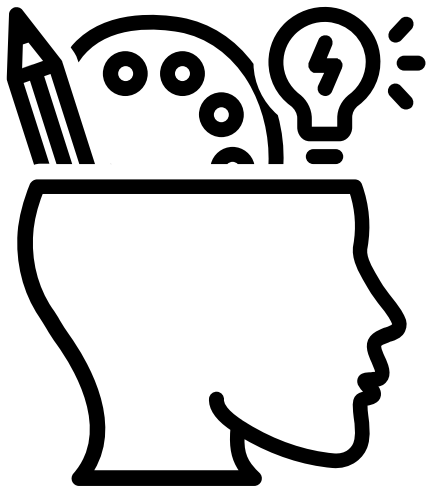


## >>> PROGRESS REPORTS

First trimester progress reports were sent home following the conclusion of the first trimester. We have revamped progress reports this year in order to fully align to the standards-based Mastery Transcript process. Reports include a class overview, individual standards-based feedback, and additional comments next to the standards. The lengthy narrative has been removed in favor of standard specific feedback. If you would like more anecdotal feedback about your child, conferences are the most appropriate venue for that information.

## >>> REAL WORLD SKILLS DAYS

On Thursday, December 21st, we will be having our first Middle School Real World Skills Day. This abbreviated day program allows students to develop essential skills for navigating the complex world of media, finance, and communication.



## ➤➤➤ SNOW DAY PLAN

In the event of snow, Middle School students will have 2 true snow days with no academic expectations. If we reach snow day number 3, students will be provided with a remote work plan and teacher office hours. Students will receive credit for attending school on these days only if they complete the assigned work. As always, teachers will differentiate work and expectations to meet the needs of all learners.



## ➤➤➤ INFO NIGHT FOR MS

On December 5th, we held an information session for Middle School parents. This event aimed to provide a comprehensive overview of the Upper School program. We were fortunate to be joined by three upper school students who answered questions about their WWS experience as well. See [here](#) for the information shared with parents at this event.

## ➤➤➤ UPPER SCHOOL SHADOW DAYS

In order to enhance Middle School students' understanding of the Upper School program as they begin to make their decisions for next year, 8th grade students will "shadow" designated upper school students for a portion of the school day in small groups January 16 - 19 from 9:53 - 1:00.

9:53 - Snack & Recess

10:30 - Class

12:00 - Lunch & Flex

## ➤➤➤ YEARBOOK

As in the past, the Yearbook for Middle School this year will be available through the TreeRing website. Students in the Yearbook club have been meeting during Flex, and we will provide an update when an ordering link is ready on the Windham Woods School website store.



# WWS MIDDLE SCHOOL SNOWSPORTS

## 2024 LEARN TO SKI/RIDE PROGRAM AT PAT'S PEAK

### *Goals of the Program*



The LTSR program functions like field trips and promotes experiential learning, team building, and project based learning, which are key goals for the WWS community



### *Lessons*

Lessons are provided by Pat's Peak instructors and are suited to all skill levels, from complete beginner to advanced skier/rider. Students who are not signed up for lessons will join WWS Snow Patrol with WWS Staff.



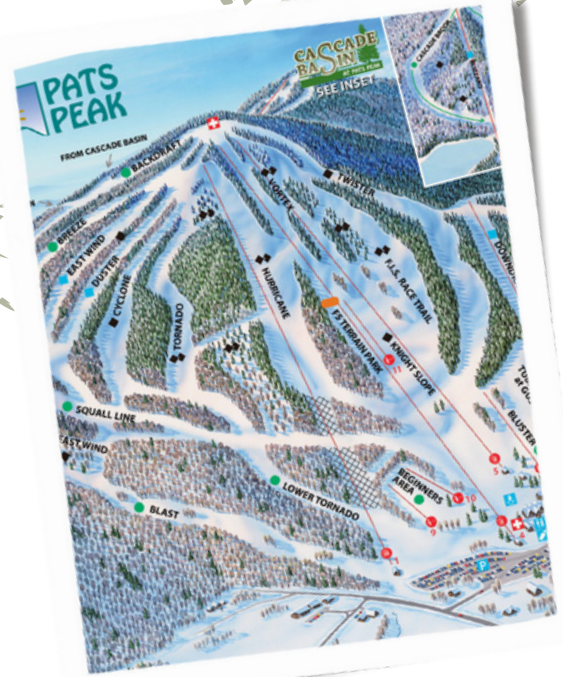
### *Free Ski/Ride*

After lessons, students will practice their skills on the slopes with buddies and adult chaperones.



### *Gear/Equipment*

Students can use their own equipment or will pick up their rentals at Pat's Peak. Helmet, goggles, and suitable attire required for all participants.



## THURSDAYS

Jan 4

Jan 11

Jan 18

Jan 25

Feb 1

Click [here](#) for  
parent info  
packet

# WWS MIDDLE SCHOOL

## SNOWSPORTS

### Program Schedule

Arrival to school	7:40am
Advisory	7:50am-8:13am
Meet to load equipment	8:15am
Depart	8:30am
Arrive at Pat's Peak	9:30am
Rentals/equipment/snack	9:30am-10:15am
Pre-lesson practice runs	10:15am-10:45am
Meet at Lodge	10:45am - 11:00am
Lesson/Snow Patrol	11:00am - 12:00pm
Free Ski/Ride in groups	12:00pm - 12:45pm
Meet at Lodge & lunch	12:45pm
Load vans	1:00pm-1:15pm
Depart	1:20pm
Return to WWS	2:20pm
Unload/ Go to Advisory	2:20-2:30pm
Advisory and dismissal	2:35-2:50pm

#### Afternoon Extended Free Ski/Ride option\*

1pm - 4pm - Meet at lodge to change  
 4pm- 4:30pm - Load and Depart  
 5:30pm - -Return to WWS

\*Participation in the afternoon option is subject to limited number of seats available on the van returning to WWS. A student will lose the privilege of joining the afternoon option or continue in the program if the student does not adhere to expectations for conduct.



Half Day - Noon Dismissal	December 21
Winter Vacation - No School	Dec 22 - Jan 2
School Resumes for Students	January 3
MLK Jr. Day - No School	January 15
Staff Development - No School	February 9
February Break - No School	Feb 19-23
End of Trimester 2	March 1